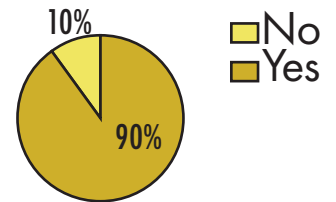
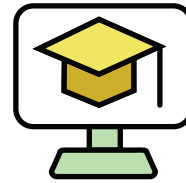


Top 5 Challenges

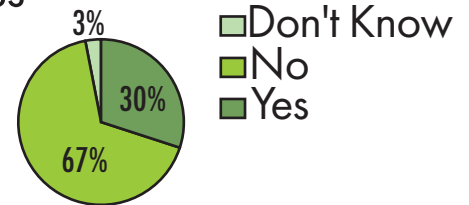
- 1 IT support
- 2 Accessibility/ADA compliance
- 3 Adequate admin authority
- 4 Adequate assessment
- 5 Monitoring emerging practices

Offer Online Degrees

Asynchronous



Synchronous

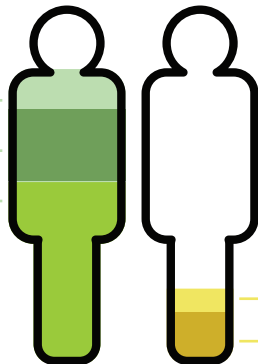


Learning Admin Reports

80% Report to an academic supervisor

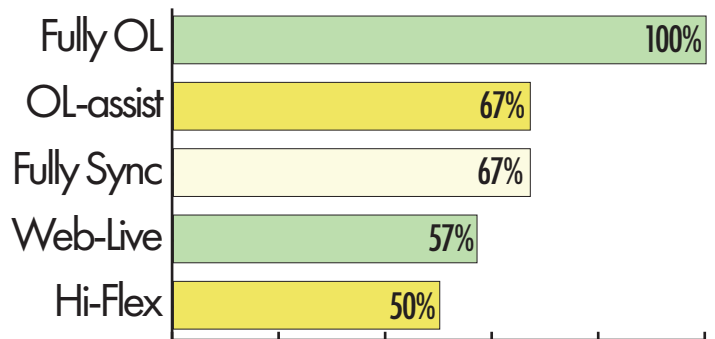
20% Report to non-academic supervisor

10% Director
20% Dean
50% VP

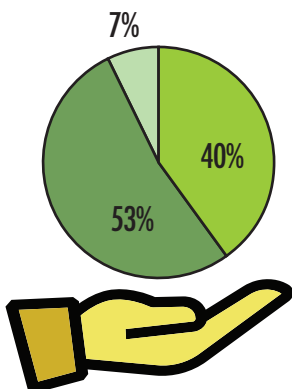


7% Director
13% IT Admin

Types of online classes currently offered



Support from Leadership



93% indicate leadership supports the OL program

Little or no support
Supportive
Very supportive

Staff Size Pre v Post-Pandemic



In-person enrollment restored to pre-pandemic levels

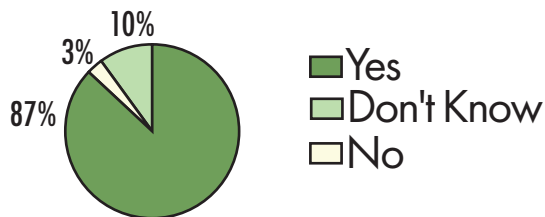


Yes No Don't know





Offer Dual-Credit to High School Students



Top 5 Access to Content Besides Faculty

- 77% | Online program staff
- 37% | Academic Dean
- 23% | Department Chair
- 13% | Student Services
- 3% | VPAA

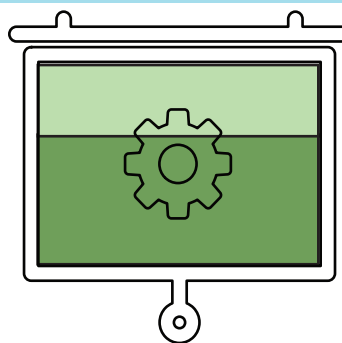


Top 5 Most Common Positions

- 87% | Administrator
- 83% | Instructional Designer
- 73% | LMS Administrator
- 67% | Technical Support
- 53% | Faculty Trainer



Required training for faculty

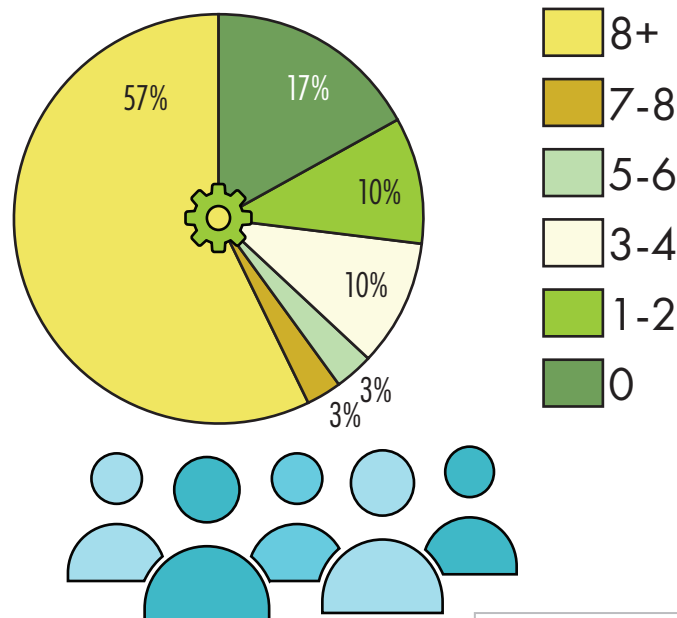


Top 3 Least Common Positions

- 17% | Navigator/Retention Specialist
- 23% | Videographer
- 23% | Assistive Technician



Hrs of LMS training required for faculty



Importance of AI in the next 5 years

83% AI will be important

16% AI will not be important

3% Not important
13% Not very important

20% Important

43% Very important

20% Mission critical



<https://www.itcnetwork.org>